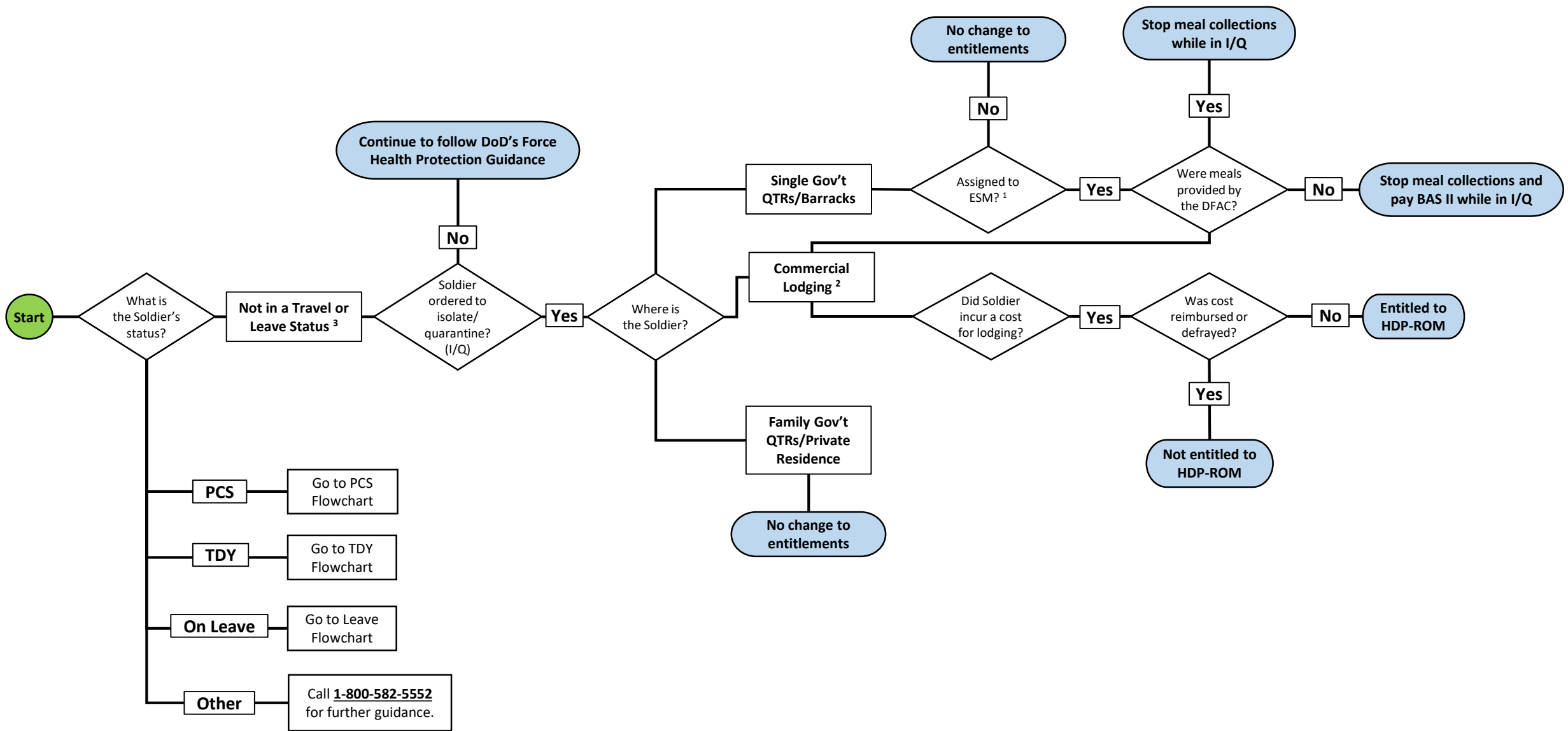


# Ordered into Restriction of Movement (ROM)



## NOTES:

1. **Essential Station Messing (ESM)** commonly referred to as a Meal Card Holder – These Soldiers are assigned to single Gov’t Quarter/Barracks and are required to eat in the DFAC. Soldiers are subject to automatic payroll deductions for meals provide by or on behalf of the Government.

2. **Commercial Lodging:** Means a motel, hotel, inn, apartment, or similar entity that offers lodging to the public in exchange for compensation. However, for the purpose of HDP-ROM, the commercial lodging cannot be the Soldiers residence and the Soldier must incur an additional cost for a secondary location to self-monitor.

3. **Not in a Travel or Leave Status:** Soldiers are for duty at their primary duty station/location. These Soldiers are not in a TDY, PCS, or returning from deployment status. Must Soldiers must also be ordered into restriction of movement for self-monitoring.